

MINDANAO WEATHER FORECAST #MIN_PRSD

ISSUED AT: 5:00 AM 24 November 2020

VALID UNTIL: 5:00 AM Tomorrow

SYNOPSIS: Tail-end of a Frontal System (Shearline) affecting the eastern sections of Mindanao.

FORECAST:

Davao Region and Caraga will experienced cloudy skies with scattered rainshowers and thunderstorms due to Tail-end of a Frontal System (Shearline). Rest of Mindanao will be partly cloudy to cloudy with isolated rainshowers due to Localized Thunderstorms. Light to moderate winds from northeast to north with slight to moderate seas.

KAUGALINGONG DAYALEKTO:

Ang rehiyon sa Davao ug Caraga makasinati sa mapanganuron nga kalangitan inubanan sa katag-katag nga pag ulan ug panalugdog tungod kini sa Tail-end of a Frontal System (Shearline). Samtang ang ubang dapit sa Mindanao makasinati sa panalagsang pagdag-um ngadto na sa mapanganuron nga kalangitan inubanan sa pat-ak pat-ak nga pag ulan, kilat ug pagpanalugdog tungod kini sa localized thunderstorms. Hinay ngadto na sa kasarangan nga hangin ang magagikan sa amihanang silangan ngadto na sa amihanang direksyon ug ang kadagatan hapsay ngadto na sa kasarangan ang pagbalud.

OVER EL SALVADOR CITY:

Maximum Temperature: 2:00 PM Yetserday --- 30.2 °C

Minimum Temperature: 2:00 AM Today --- 23.0 °C

Maximum Relative Humidity: 2:00 AM Today --- 97 %

Minimum Relative Humidity: 8:00 AM Yesterday --- 79 %

Sunrise Today : 5:38 AM

Sunset Today : 5:19 PM

Moonrise Today : 1:22 PM

Moonset Tomorrow : 1:35 AM

For more information and queries, please call at telephone number (088) 555-0485 or log on to [https:// http://www1.pagasa.dost.gov.ph/.../regional.../mindanao-prsd](https://http://www1.pagasa.dost.gov.ph/.../regional.../mindanao-prsd) and join our Facebook Group at <https://www.facebook.com/groups/MINDANAO.PRSD>

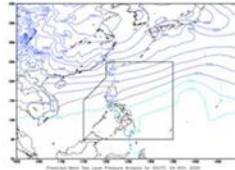


Republic of the Philippines
Department of Science and Technology
**Philippine Atmospheric, Geophysical and
Astronomical Services Administration (PAGASA)**
Mindanao PAGASA Regional Services Division (MPRSD)

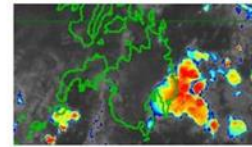
24-HOUR LOCAL PUBLIC WEATHER FORECAST: MINDANAO

Issued at: 5:00 AM 24 November 2020

Valid Until: 5:00 AM Tomorrow



DOST PAGASA HIMAWARI-8 IRI1 November 24, 2020, 4:40 am



| | | | | | | | | | |
|--|-------------|---|---------|--|------------------------------|--|--------------|-----------------|-----------|
| SYNOPSIS: Tail-end of a Frontal System (Shearline) affecting the eastern sections of Mindanao. | | | | | | | | | |
| FORECAST WEATHER CONDITIONS | | | | | | | | | |
| Place | | Weather Condition | | Caused by | | Impacts | | | |
| Davao region and Caraga | | Cloudy skies with scattered rainshowers and thunderstorms | | Tail - end of a Frontal System (Shearline) | | Possible flash floods or landslides due to light to moderate to at times heavy rains | | | |
| Rest of Mindanao | | Partly cloudy to cloudy skies with isolated rainshowers | | Localized Thunderstorms | | Possible floods or landslides during severe thunderstorms | | | |
| FORECAST WIND AND COASTAL WATER CONDITIONS | | | | | | | | | |
| Region | | Speed | | Direction | | Coastal Waters | | | |
| Northern Mindanao | | Light to Moderate | | Northeast to North | | Slight to Moderate (0.6 to 2.1 meters) | | | |
| Caraga | | Light to Moderate | | Northeast to North | | Slight to Moderate (0.6 to 2.1 meters) | | | |
| Davao Region | | Light to Moderate | | Northeast to North | | Slight to Moderate (0.6 to 2.1 meters) | | | |
| SOCCSKSARGEN | | Light to Moderate | | Northeast to North | | Slight to Moderate (0.6 to 2.1 meters) | | | |
| Zamboanga Peninsula | | Light to Moderate | | Northeast to North | | Slight to Moderate (0.6 to 2.1 meters) | | | |
| BARMM | | Light to Moderate | | Northeast to North | | Slight to Moderate (0.6 to 2.1 meters) | | | |
| FORECAST IN LOCAL DIALECT | | | | | | | | | |
| Ang rehiyon sa Davao ug Caraga makasinati sa mapanganuron nga kalangitan inubanan sa katag-katag nga pag ulan ug panalugdog tungod kini sa Tail-end of a Frontal System (Shearline). Samtang ang ubang dapit sa Mindanao makasinati sa panalagsang pagdag-um ngadto na sa mapanganuron nga kalangitan inubanan sa pat-ak pat-ak nga pag ulan, kilat ug pagpanalugdog tungod kini sa localized thunderstorms. Hinay ngadto na sa kasarangan nga hangin ang magagikan sa amihanang silangan ngadto na sa amihanang direksyon ug ang kadagatan hapsay ngadto na sa kasarangan ang pagbalud. | | | | | | | | | |
| EXTREMES OF TEMPERATURE AND RELATIVE HUMIDITY FOR THE 24-HOUR PERIOD ENDING AT 5:00 AM TODAY Recorded at PAGASA WEATHER STATION, Molugan, El Salvador City, Misamis Oriental | | | | | | | | | |
| Temperature (°C) | Maximum | 30.2 | 2:00 PM | Yesterday | Relative Humidity (%) | Maximum | 97 | 2:00 AM | Today |
| | Minimum | 23.0 | 2:00 AM | Today | | Minimum | 79 | 8:00 AM | Yesterday |
| TIDES AND ASTRONOMICAL INFORMATION Over El Salvador City | | | | | | | | | |
| Tidal Predictions for Macajalar Bay (m) (Courtesy of NAMRIA) | | Today | | Tomorrow | | | Today | Tomorrow | |
| | High | - | - | - | - | Sunrise | 5:38 AM | - | |
| | Low | 12:50 PM | 0.07 | - | - | Sunset | 5:19 PM | - | |
| | High | 8:25 PM | 0.74 | - | - | Moonrise | 1:22 PM | - | |
| | Low | - | - | - | - | Moonset | - | 1:35 AM | |
| | | | | | | Illumination | 64 % | - | |

PREPARED BY: JPF

"Tracking the sky ... helping the country"

Mindanao PAGASA Regional Services Division, Molugan, El Salvador City 9017

<http://baqona.pagasa.dost.gov.ph/>

Tei/Fax (088) 555-0485



Republic of the Philippines
 Department of Science and Technology
**Philippine Atmospheric, Geophysical and
 Astronomical Services Administration (PAGASA)**
Mindanao PAGASA Regional Services Division (MPRSD)

24-Hour Weather Forecast and Extended Weather Outlook for Selected Cities/Municipalities:

Issued at: 5:00 AM 24 November 2020

Valid Until: 5:00 AM Tomorrow

| CITIES/ MUNICIPALITIES | 24-Hr Weather, Winds and Sea Conditions Forecast (from 5 AM today until 5 AM tomorrow) | | Extended Weather Outlook Duration: 5 AM today until 5 AM of the following day | | | |
|---------------------------|--|--|--|----------------|----------------|----------------|
| | 24 NOV | | 25 NOV | 26 NOV | 27 NOV | 28 NOV |
| | El Salvador City | 22 °C 32 °C | Moderate : Northeast Coastal Waters: Moderate | 22 °C 32 °C | 23 °C 32 °C | 23 °C 33 °C |
| Cagayan de Oro City | 23 °C 32 °C | Moderate : Northeast Coastal Waters: Moderate | 23 °C 32 °C | 24 °C 32 °C | 24 °C 33 °C | 24 °C 33 °C |
| Malaybalay City | 18 °C 30 °C | Moderate : Northeast | 18 °C 31 °C | 18 °C 31 °C | 18 °C 31 °C | 18 °C 31 °C |
| Metro Davao | 25 °C 31 °C | Light to Moderate : Northeast to North Coastal Waters: Slight to Moderate | 25 °C 33 °C | 25 °C 34 °C | 25 °C 33 °C | 25 °C 34 °C |
| Zamboanga City | 24 °C 34 °C | Light to Moderate : Northeast Coastal Waters: Slight to Moderate | 24 °C 34 °C | 25 °C 34 °C | 25 °C 34 °C | 25 °C 34 °C |
| Surigao City | 25 °C 33 °C | Light to Moderate : Northeast to North Coastal Waters: Slight to Moderate | 25 °C 33 °C | 25 °C 32 °C | 25 °C 32 °C | 25 °C 32 °C |
| Hinatuan | 24 °C 33 °C | Light to Moderate : Northeast to North Coastal Waters: Slight to Moderate | 24 °C 32 °C | 24 °C 32 °C | 24 °C 32 °C | 24 °C 32 °C |
| Butuan City | 26 °C 32 °C | Light to Moderate : Northeast to North Coastal Waters: Slight to Moderate | 26 °C 32 °C | 26 °C 32 °C | 26 °C 32 °C | 26 °C 32 °C |
| Cotabato City | 23 °C 33 °C | Light to Moderate : Northeast to North Coastal Waters: Slight to Moderate | 23 °C 33 °C | 23 °C 33 °C | 23 °C 33 °C | 23 °C 33 °C |
| General Santos City | 24 °C 33 °C | Light to Moderate : Northeast to North Coastal Waters: Slight to Moderate | 24 °C 33 °C | 24 °C 33 °C | 24 °C 33 °C | 24 °C 34 °C |
| Dipolog City | 25 °C 32 °C | Light to Moderate : Northeast to North Coastal Waters: Slight to Moderate | 25 °C 32 °C | 25 °C 32 °C | 25 °C 32 °C | 25 °C 32 °C |
| Tagum City | 26 °C 33 °C | Light to Moderate : Northeast to North Coastal Waters: Slight to Moderate | 26 °C 33 °C | 26 °C 32 °C | 25 °C 33 °C | 25 °C 33 °C |
| Marawi City | 23 °C 33 °C | Light to Moderate : Northeast to North | 23 °C 33 °C | 24 °C 33 °C | 24 °C 33 °C | 23 °C 33 °C |
| Ozamis City/Iligan City | 24 °C 33 °C | Light to Moderate : Northeast to North Coastal Waters: Slight to Moderate | 24 °C 33 °C | 24 °C 32 °C | 24 °C 32 °C | 24 °C 33 °C |
| Pagadian City | 24 °C 33 °C | Light to Moderate : Northeast to North Coastal Waters: Slight to Moderate | 24 °C 33 °C | 24 °C 32 °C | 24 °C 32 °C | 24 °C 32 °C |

LEGEND:

| | | | | | | | |
|--|---|--|--|--|--|--|------------------------|
| | Clear Skies | | Partly Cloudy to at times Cloudy with Rainshowers and/or Thunderstorms | | Cloudy Skies with Rainshowers and/or thunderstorms | | Monsoon Rains or Rains |
| | Partly Cloudy Skies | | Cloudy Skies | | Light Rains | | Rains with Gusty Winds |
| | Partly Cloudy to at times Cloudy with Rainshowers | | Cloudy Skies with isolated rainshowers | | Occasional Rains | | Stormy |

For more information and queries, please call at telephone number (088) 555-0485 or join our Facebook Group at <https://www.facebook.com/groups/MINDANAO.PRSD>

END OF FORECAST

PREPARED BY: JPF

"Tracking the sky ... helping the country"

Mindanao PAGASA Regional Services Division, Molugan, El Salvador City 9017

<http://baqona.pagasa.dost.gov.ph/>

Tel/Fax (088) 555-0485