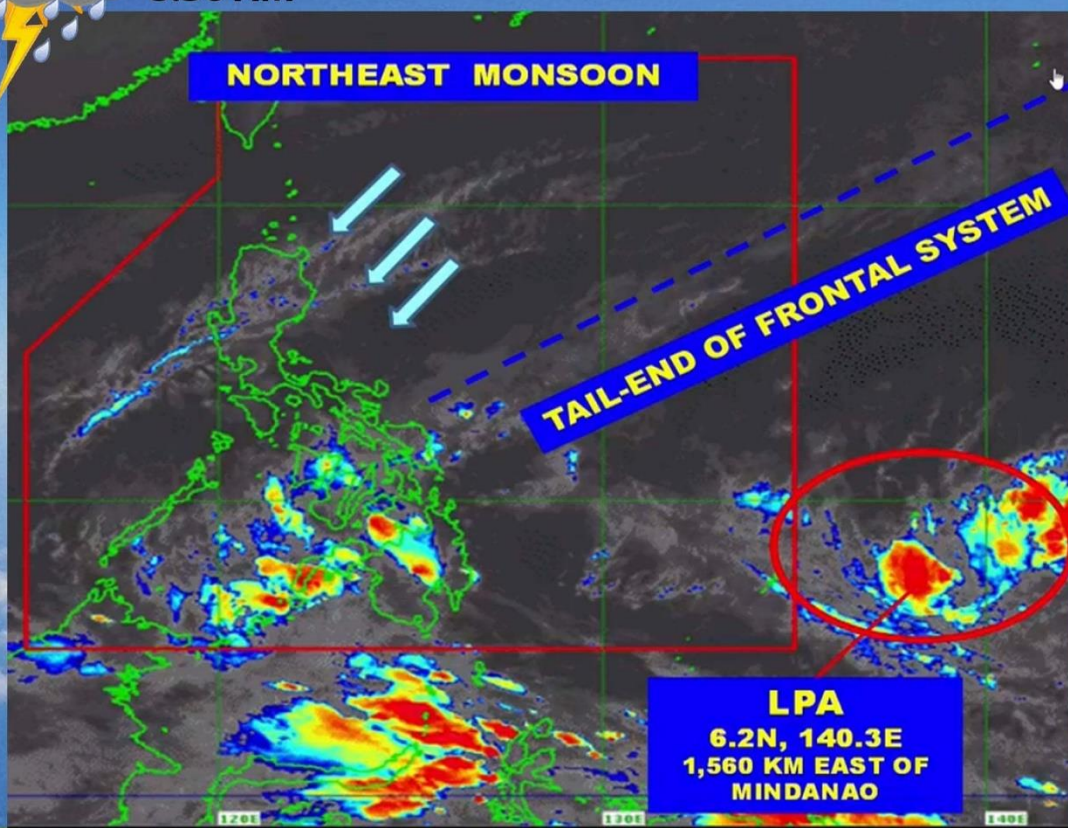




**Weather Monitoring**  
February 15 (Monday)  
8:30 AM



Department of Agriculture - RFO XII  
Disaster Risk Reduction & Management Unit  
Regional Field Office XII



Source: **PAGASA Weather Update**  
issued at **5AM, 15 February 2021**



**Weather Monitoring**  
**February 15 (Monday)**  
**8:30 AM**



## **Low Pressure Area (SLPA)**



- outside of Philippine Area of Responsibility  
eastimate 1,560km East of Mindanao  
(6.2°N, 140.3°E)



Low chance of developing into a tropical depression



Partly cloudy to cloudy skies with isolated  
rainshowers



**Department of Agriculture - RFO XII**  
**Disaster Risk Reduction & Management Unit**  
**Regional Field Office XII**



Source: **PAGASA Weather Update**  
issued at **5AM, 15 February 2021**



**Weather Monitoring**  
**February 15 (Monday)**  
**8:30 AM**

**MAJOR RIVER BASINS  
UNDER FLOOD WATCH**

**NONE**

**DAMS/RESERVOIRS  
UNDER FLOOD WATCH**

**NONE**



**Department of Agriculture - RFO XII**  
**Disaster Risk Reduction & Management Unit**  
**Regional Field Office XII**

**Source: PAGASA Weather Update**  
**issued at 5AM, 15 February 2021**

