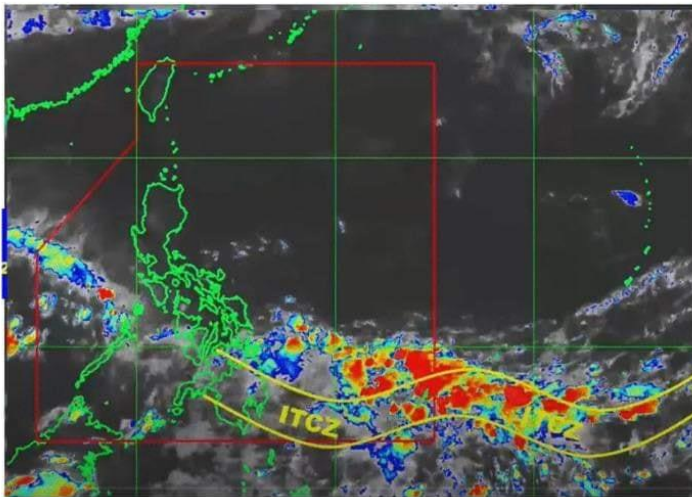




### PREVAILING WEATHER SYSTEMS



DOST-PAGASA HIMAWARI E-IR IMAGE

- **Intertropical Convergence Zone (ITCZ) affecting Mindanao.**

### FORECAST WEATHER CONDITIONS

| Region/Province                             | Weather System                       | Effects                                                                  |
|---------------------------------------------|--------------------------------------|--------------------------------------------------------------------------|
| Northern Mindanao, Caraga, and Davao Region | ITCZ                                 | Cloudy skies with scattered rainshowers and thunderstorms                |
| Metro Manila and the rest of the country    | Easterlies / Localized Thunderstorms | Partly cloudy to cloudy skies with isolated rainshowers or thunderstorms |

### FLOOD WATCH

#### Major River Basin

**Buayan-Malungon-Southern Mindanao**

#### Major Dams/Reservoir

**NONE**

Sources: PAGASA Weather Update issued at 4 AM, 29 April 2022; PAGASA 24-hour Public Weather Forecast issued at 4 AM, 29 April 2022

#WeatherForecast | PAGASA Weather Forecast for 29 April 2022 (Friday, AM Forecast)

Intertropical Convergence Zone (ITCZ) affecting Mindanao.

Possible flash floods or landslides due to moderate to at times heavy rains or severe thunderstorms.

#OneDA

#MasaganangAni

#MataasNaKita

#AgriTayoSoccksargen