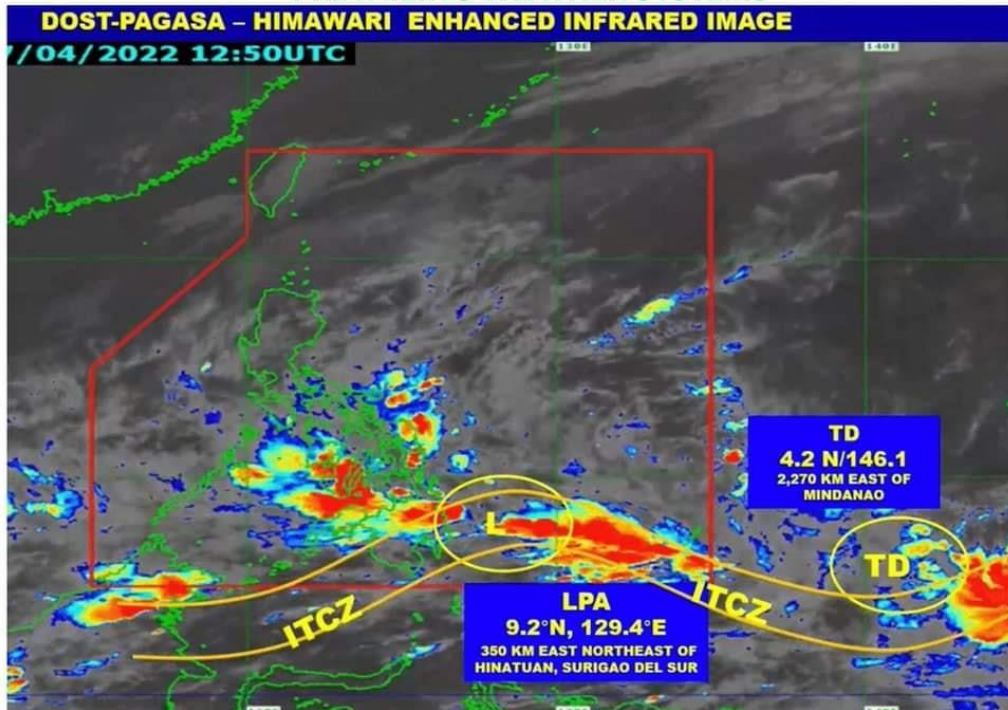




PREVAILING WEATHER SYSTEMS



4 AM UPDATE 08 APRIL 2022 FRIDAY

DOST-PAGASA HIMAWARI E-IR IMAGE

- **Low Pressure Area (LPA)**
 - 📍 350 km East Northeast of Hinatuan, Surigao del Sur (9.2°N, 129.4°E)
 - ⚠️ Low chance of developing into a Tropical Cyclone
- **Tropical Depression OUTSIDE PAR**
 - 📍 2,270 km east of Mindanao (4.2°N, 146.1°E)
 - 🌀 55 km/h near the center and gustiness of up to 70 km/h
 - 👉 Westward at 10 km/h
 - ⚠️ May enter PAR on Monday
- **Intertropical Convergence Zone (ITCZ) affecting Visayas and Mindanao**

FORECAST WEATHER CONDITIONS

Region/Province	Weather System	Effects
Visayas, Mindanao, MIMAROPA, Bicol Region, and Quezon	LPA / ITCZ	Cloudy skies with scattered rainshowers and thunderstorms
Cagayan Valley, Apayao, Kalinga, Ifugao, Mountain Province, and Aurora	Northeasterly Surface Windflow	Cloudy skies with rains
Ilocos Region, Abra, and Benguet	Northeasterly Surface Windflow	Partly cloudy to cloudy skies with isolated light rains
Metro Manila and the rest of Luzon	Localized Thunderstorms	Partly cloudy to cloudy skies with isolated rainshowers or thunderstorms

FLOOD WATCH

Major River Basin

**Tagum-Libuganon
Buayan-Malungon
Davao**

Major Dams/Reservoir

NONE

Sources: PAGASA Weather Update issued at 4 AM, 8 April 2022; PAGASA 24-hour Public Weather Forecast issued at 4 AM, 8 April 2022

#Advisory || PAGASA Weather Forecast for 8 April 2022 (Friday, AM Forecast)

Low Pressure Area (LPA) was estimated based on all available data at 350 km East Northeast of Hinatuan, Surigao del Sur. It is embedded along the Intertropical Convergence Zone (ITCZ) affecting Visayas and Mindanao.

Tropical Cyclone outside PAR (2,270 km east of Mindanao). It is moving Westward at 10 kph and is expected to enter PAR on Monday.

Possible flash floods or landslides during moderate to at times heavy rains or severe thunderstorms.

#OneDA