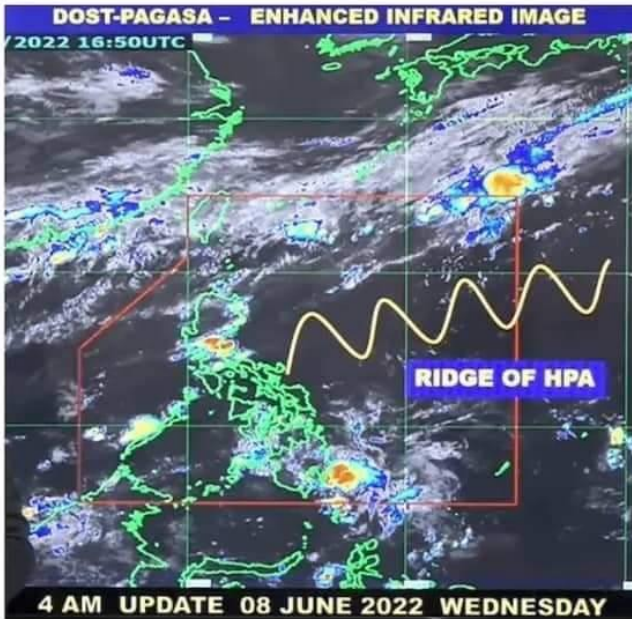




PREVAILING WEATHER SYSTEMS



DOST-PAGASA HIMAWARI E-IR IMAGE

● Ridge of High Pressure Area (HPA)

- extending over the eastern section of Luzon.
- Possible flash floods or landslides due to moderate to at times heavy rains or severe thunderstorms.

FORECAST WEATHER CONDITIONS

Region/Province	Weather System	Effects
Metro Manila and the rest of the country	Localized Thunderstorms	Partly cloudy to cloudy skies with isolated rainshowers or thunderstorms

FLOOD WATCH

Major River Basin	Major Dams/Reservoir
NONE	NONE

Sources: PAGASA Weather Update issued at 4 AM, 8 June 2022; PAGASA 24-hour Public Weather Forecast issued at 4 AM, 8 June 2022

#WeatherForecastToday | PAGASA Weather Forecast for 8 June 2022 (Wednesday, AM Forecast) SOCCSKSARGEN will have partly cloudy to cloudy skies with isolated rainshowers or thunderstorms due to Localized Thunderstorms.

Possible flash floods or landslides due to moderate to at times heavy rains or severe thunderstorms.

#OneDA

#MasaganangAni

#MataasNaKita

#AgriTayoSoccsksargen