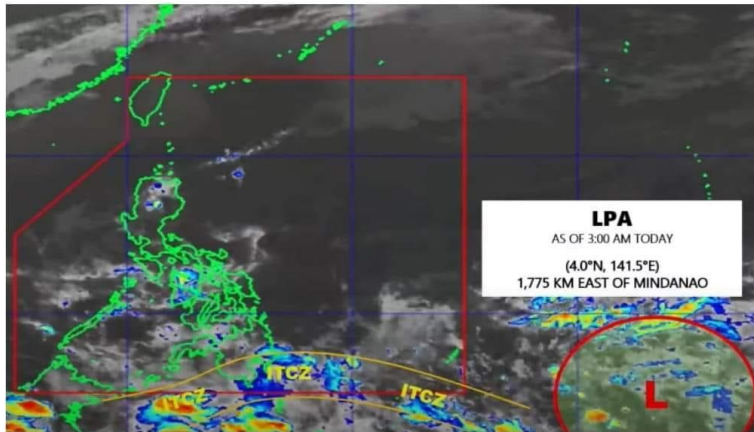




PREVAILING WEATHER SYSTEMS



DOST-PAGASA HIMAWARI E-IR IMAGE

- Intertropical Convergence Zone (ITCZ) affecting Southern Mindanao.
- LPA outside PAR (1,775 km east of Mindanao) with a low chance of developing into a tropical cyclone

FORECAST WEATHER CONDITIONS

Region/Province	Weather System	Effects
Caraga, Davao Region, South Cotabato, Sarangani, Basilan, Sulu, and Tawi-Tawi	ITCZ	Cloudy skies with scattered rainshowers and thunderstorms
Metro Manila and the rest of the country	Localized Thunderstorms	Partly cloudy to cloudy skies with isolated rainshowers or thunderstorms

FLOOD WATCH

Major River Basin

CAGAYAN

Major Dams/Reservoir

NONE

Sources: PAGASA Weather Update issued at 4 AM, 23 December 2021; PAGASA 24-hour Public Weather Forecast issued at 4 AM, 23 December 2021

#Advisory || PAGASA Weather Update for 23 December 2021 Thursday, AM Forecast

Intertropical Convergence Zone (ITCZ) affecting Southern Mindanao.

We are currently monitoring an LPA outside PAR (1,775 km east of Mindanao) with a low chance of developing into a tropical cyclone. It is expected to enter PAR on Sunday or Monday.

Possible flash floods or landslides due to moderate to at times heavy rains.