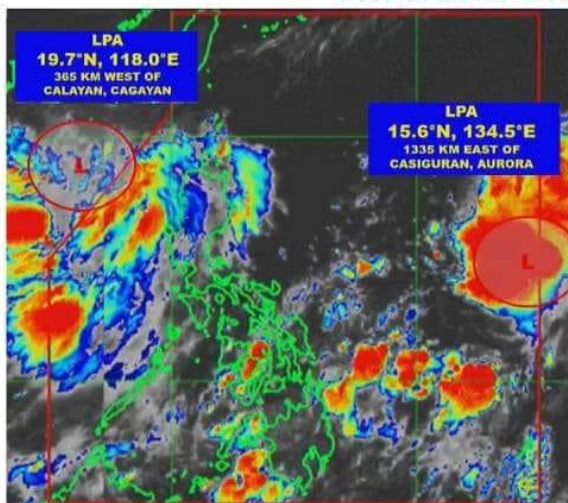




## PREVAILING WEATHER SYSTEMS



DOST-PAGASA HIMAWARI E-IR IMAGE

- **Low Pressure Area (LPA) with likelihood of developing into a tropical cyclone (TC)**  
 1,325 km East of Central Luzon / 1,335 km East of Casiguran, Aurora (15.6°N, 134.5°E)
- **LPA outside PAR**  
 365 km West of Calayaan, Cagayan (19.7°N, 118.0°E)
- **Southwest Monsoon affecting the western sections of Northern and Central Luzon.**

## FORECAST WEATHER CONDITIONS

Region/Province	Weather System	Effects
Pangasinan, Zambales, and Bataan	Southwest Monsoon	Cloudy skies with scattered rainshowers and thunderstorms
Metro Manila and the rest of the country	Southwest Monsoon / Localized Thunderstorms	Partly cloudy to cloudy skies with isolated rainshowers or thunderstorms

## FLOOD WATCH

### Major River Basin

**AGNO**

### Major Dams/Reservoir

**Magat Sub-basin**

Sources: PAGASA Weather Update issued at 4 AM, 18 August 2022; PAGASA 24-hour Public Weather Forecast issued at 4 AM, 18 August 2022

PAGASA Weather Forecast for 19 August 2022 (Friday, AM Forecast)

At 3:00 AM today, a Low Pressure Area (LPA) was estimated based on all available data at 1,325 km East of Central Luzon (15.6°N, 134.5°E) with likelihood of developing into a tropical cyclone.

Southwest Monsoon affecting the western sections of Northern and Central Luzon.

Possible flash floods or landslides due to moderate to at times heavy rains or severe thunderstorms.

#AgriTayoSoccsksargen